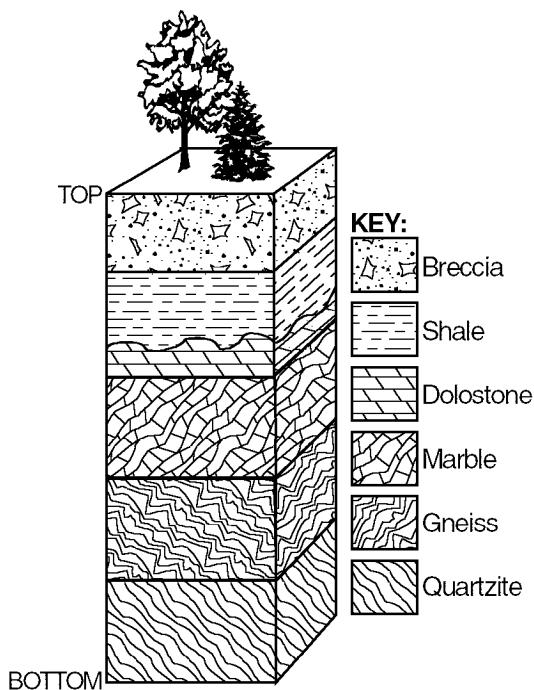


Name: _____ Period: _____ Date: _____

WS Sedimentary Rocks

- ___ 1) According to the *Earth Science Reference Tables*, sedimentary rocks formed by compaction and cementation of land-derived sediments are classified on the basis of
- A) rate of formation
 - B) composition
 - C) particle size
 - D) type of cement
- ___ 2) A sample of conglomerate consists mostly of fragments of granite and sandstone. The *best* inference that can be made from the sample is that this conglomerate
- A) formed from other rocks
 - B) resulted from solidification
 - C) formed during the Cambrian Period
 - D) contains fossils
- ___ 3) Particles of sediment collected from a lake bottom averaged 1.2 centimeters in diameter. If left on the lake bottom to become buried by more sediment and compressed into rock, these particles would form
- A) granite
 - B) quartzite
 - C) conglomerate
 - D) sandstone
- ___ 4) According to the *Earth Science Reference Tables*, a rock that forms directly from land-derived sediments is
- A) sandstone
 - B) granite
 - C) dolostone
 - D) gabbro
- ___ 5) Which type of rock is most likely to contain fossils?
- A) metaconglomerate
 - B) shale
 - C) gneiss
 - D) granite
- ___ 6) According to the *Earth Science Reference Tables*, compaction of pebble-size particles would form the sedimentary rock known as
- A) siltstone
 - B) shale
 - C) conglomerate
 - D) sandstone
- ___ 7) According to the *Earth Science Reference Tables*, particles of which size could have formed shale?
- A) 0.2 cm
 - B) 0.002 cm
 - C) 0.02 cm
 - D) 0.0002 cm
- ___ 8) According to the *Earth Science Reference Tables*, the sedimentary rock, gypsum, forms as a result of
- A) faulting and folding of shale
 - B) metamorphism of limestone
 - C) weathering of siltstone
 - D) evaporation of seawater

- ___ 9) The diagram below represents a cross section of rock layers that have not been overturned.



The breccia layer is composed mostly of

- A) cemented, rounded rock fragments
- B) microscopic shells
- C) intergrown, fine-textured crystals
- D) cemented, angular rock fragments

- ___ 10) A river carrying pebbles, sand, silt, and clay flows into the ocean. The sediments are sorted by size as they are deposited at different distances from shore. Which sedimentary rock will most likely form from the sediment deposited farthest from shore?

- A) shale
- B) siltstone
- C) sandstone
- D) conglomerate

- ___ 11) Which group lists rocks in order by grain size from *smallest* to *largest*?

- A) shale, sandstone, conglomerate
- B) conglomerate, sandstone, shale
- C) sandstone, shale, conglomerate
- D) shale, conglomerate, sandstone

- ___ 12) Which rock was formed by the compaction and cementation of particles 0.07 centimeter in diameter? [Refer to the *Earth Science Reference Tables*.]

- A) limestone
- B) shale
- C) sandstone
- D) basalt

- ___ 13) Large deposits of rock gypsum and rock salt usually form in areas of

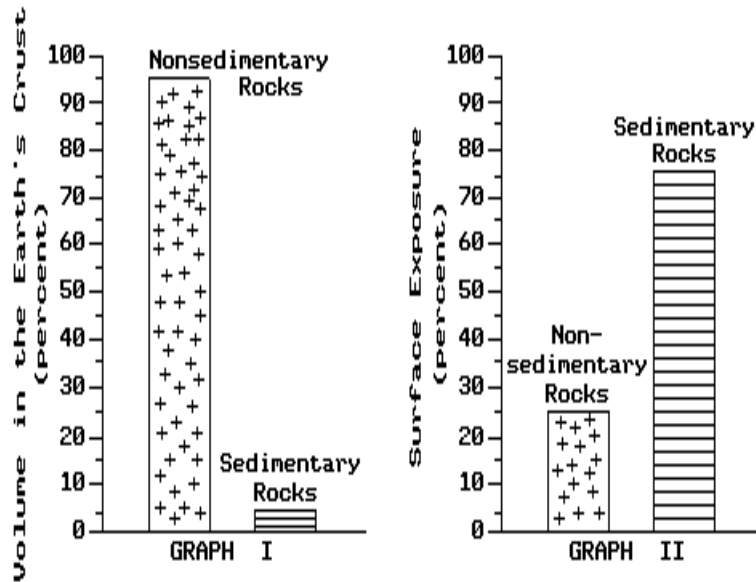
- A) fault zones in the crust
- B) active volcanoes
- C) shallow evaporating seas
- D) continental ice sheets

- ___ 14) Large rock salt deposits in the Syracuse area indicate that the area once had

- A) a range of volcanic mountains
- B) a warm, shallow sea
- C) large forests
- D) many terrestrial animals

Questions 15 and 16 refer to the following:

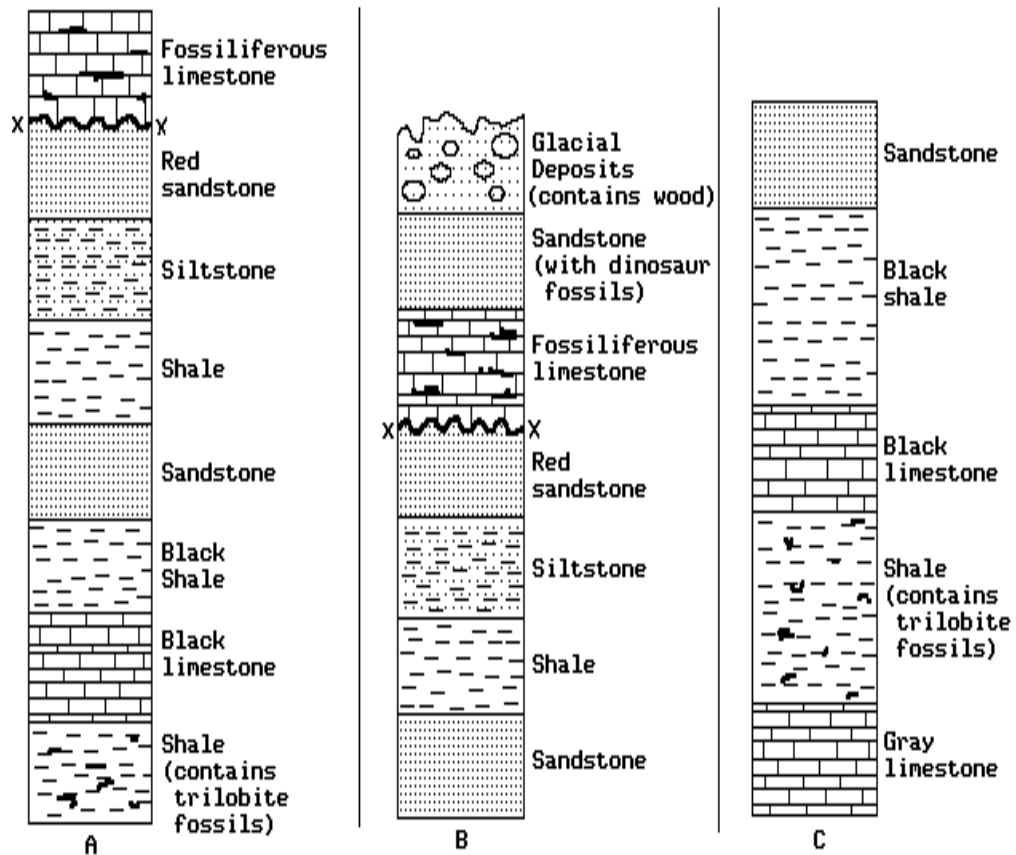
Graph I below represents the percentage of sedimentary and nonsedimentary rock which makes up the Earth's crust by volume. Graph II represents, of those rocks that are exposed at the surface (outcrops), the percentage that are sedimentary rocks and nonsedimentary rocks.



- ___ 15) Which statement is best supported by the data shown in the graphs?
- A) Rock outcrops on the Earth's surface are chiefly of the nonsedimentary type.
 - B) Most sedimentary rock is found at or near the surface of the Earth.
 - C) The crust of the Earth is composed mostly of sedimentary rocks.
 - D) Most nonsedimentary rocks are composed of the melted remains of sedimentary rocks.

- ___ 16) Most sedimentary rock has been formed by which two processes?
- A) faulting and folding
 - B) compaction and cementation
 - C) extrusion and intrusion
 - D) uplifting and melting

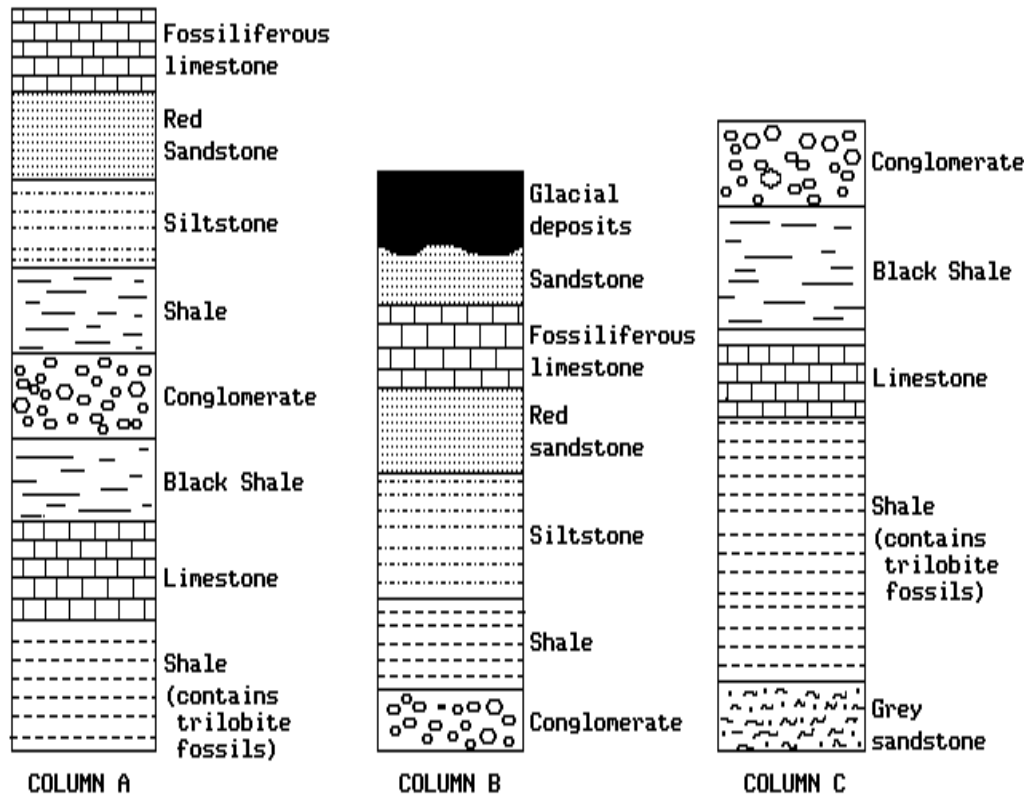
- ___ 19) The diagram below shows matching geologic columns from three different locations, A, B, and C. The locations are about 5 kilometers apart and the layers have not been overturned.



The formation of the fossiliferous limestone in column B was probably due to

- A) deposition of a variety of glacial sediments
- B) compaction and cementation of skeletons and shells of sea organisms
- C) heat and pressure which has metamorphosed the limestone and fossils
- D) cooling and solidification of molten material containing fossils

- ___ 20) The diagram below shows three geologic columns representing widely separated rock outcrops that had a common origin. Descriptions of each sedimentary rock are indicated beside the layers. The rock layers have not been overturned.



Which rock layer is composed of sediments of the *largest* grain size? [Refer to the *Earth Science Reference Tables*.]

- A) conglomerate
 B) shale
 C) sandstone
 D) siltstone